



www.klauke.com

K 05 / K 05D
K 05SP / K 05DSP



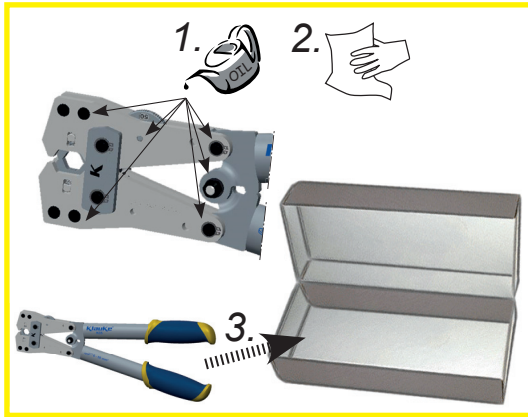
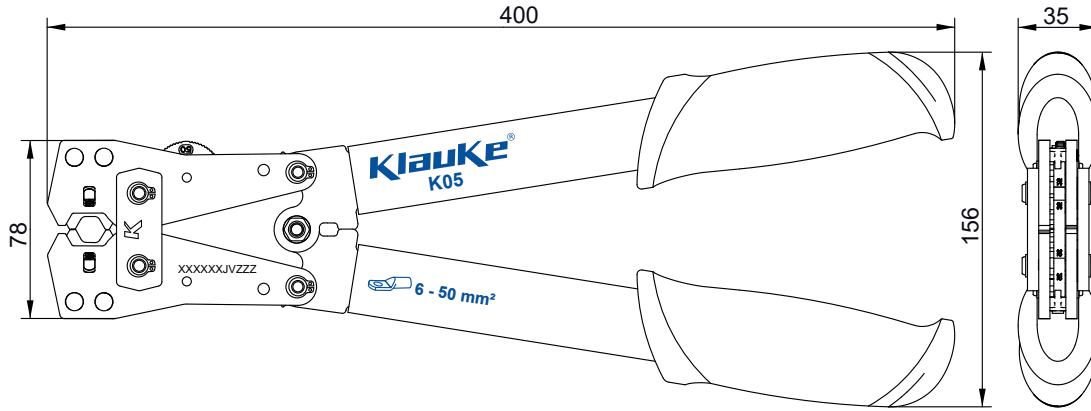
Serialnumber

WE.3180_E © 07/2015 R&D-2

Gustav Klauke GmbH • Auf dem Knapp 46 • D-42855 Remscheid • Telefon +49 2191 907 0 • www.klauke.com

Klauke


EMERSON



2 years
Warranty

World wide
Tool
Service

KLAUKE ASC
 Authorized Service Center



Standard blue connection

DIN

KLAUKE ONLY www.klauke.com
 ☎ ++49 +2191-9070

Klauke ASC
 Authorised Service Center

EN 50110

WORK

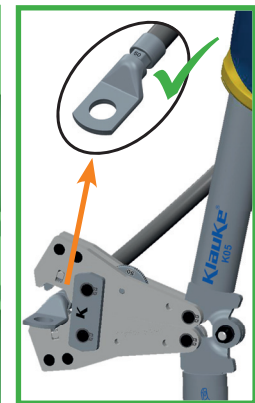
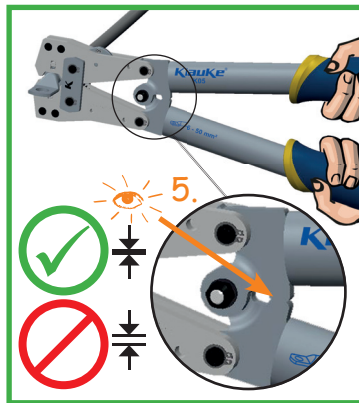
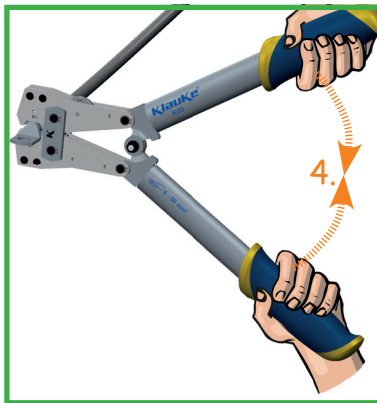
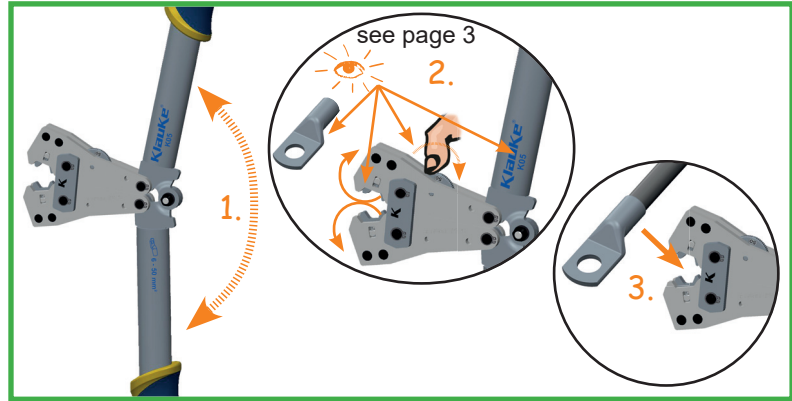
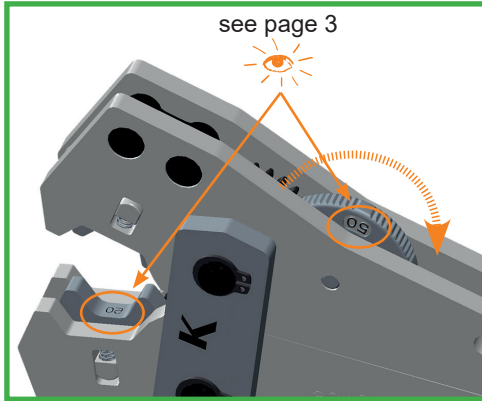








SERVICE



DON'T DO





Art.-Nr. #	 mm	 kg	geeignet für suitable for	Verb.material Connection material	Pressform Crimping mold	Kennzeichnung/Marking		Pressbereich mm ² Crimping range mm ²
						außen outside	Pressprofil Profile	
K 05 K 05SP	390	1,1	Rohrkabelschuhe und Verbinder „Normalausführung“ Tubular cable lugs and connectors „standard type“			Querschnitt Section	Querschnitt Section	6 - 50
K 05D K 05DSP	390	1,1	Presskabelschuhe (DIN 46235) und Verbinder (DIN 46267, Teil 1) nach DIN - Cu Copper compression cable lugs (DIN 46235) and connectors (DIN 46267, part 1) acc. to DIN	DIN 		Querschnitt Section	Kennzahl Code	Pressbereich mm ² Crimping range mm ²
							5	6
							6	10
							8	16
							10	25
							12	35
14	50							

